

PHILIPS

WE MAKE PRODUCTS THAT MAKE A DIFFERENCE®

FLEET ESSENTIALS

QUICK REFERENCE GUIDE

For new and innovative products, visit www.phillipsind.com

12070 Burke Street, Santa Fe Springs, CA 90670
800.423.4512 Fax 800.597.7757

PHILIPS

(B-FE-ENG) 9-26-16

ABS LECTRACOIL™



WEATHER-TITE™
PERMAPLUG™



Zinc Die-Cast Plug



5 YEAR WARRANTY
QCP™ Assembly Only
See website for details



16-125
Replacement

1/8, 2/10 & 4/12 ga. ABS Applications

30-9620	15', with WEATHER-TITE™ PERMAPLUGS™
30-9621	15', with zinc die-cast plugs
30-9624	15', with QCP™ (Quick-Change Plugs)
30-9920	15', 48" lead with WEATHER-TITE™ PERMAPLUGS™
30-9921	15', 48" lead with zinc die-cast plugs
30-9924	15', 48" lead with QCP™ (Quick-Change Plugs)

- Recommended for ABS applications and trailers with high voltage demands
- Flexible from -82°F to 195°F (-63°C to 91°C)
- Excellent recoil memory, chemical and abrasion resistance
- QCP™ cartridge is field replaceable in under two minutes!
- WEATHER-TITE™ PERMAPLUG™ assemblies offer superior corrosion protection
- As a recommended practice, use a tracker bar spring kit or pogo stick to support cable assemblies with longer leads

For a complete listing of electrical assemblies, see our full line catalog.

ABS PERMACOIL™



QCP™
(Quick-Change Plug)



WEATHER-TITE™
PERMAPLUG™



1/8, 2/10 & 4/12 ga. ABS Applications

30-4620	15', with WEATHER-TITE™ PERMAPLUGS™
30-4621	15', with zinc die-cast plugs
30-4624	15', with QCP™ (Quick-Change Plugs)

- Recommended for ABS applications
- Flexible from -87°F to 150°F (-66°C to 66°C)
- Good recoil memory, chemical and abrasion resistance
- QCP™ cartridge is field replaceable in under two minutes!
- WEATHER-TITE™ PERMAPLUG™ assemblies offer superior corrosion protection

For a complete listing of electrical assemblies, see our full line catalog.

ABS LECTRAFLEX™



QCP™
(Quick-Change Plug)



WEATHER-TITE™
PERMAPLUG™



1/8, 2/10 & 4/12 ga. ABS Applications

30-2050	12', with WEATHER-TITE™ PERMAPLUGS™
30-2051	12', with zinc die-cast plugs
30-2071	15', with zinc die-cast plugs
30-2074	15', with QCP™ (Quick-Change Plugs)

- Spring-wrapped compression contact pins
- Chemical and abrasion resistant
- QCP™ cartridge is field replaceable in under two minutes!
- WEATHER-TITE™ PERMAPLUG™ assemblies offer superior corrosion protection

For a complete listing of electrical assemblies, see our full line catalog.

Liftgate Charging Cables



Dual Pole 2/4 ga. Fine Stranded Copper

23-2326	12', 1 ground, 1 hot
23-2626	15', 1 ground, 1 hot

- Excellent recoil memory, chemical and abrasion resistance
- Flexible from -82°F to 195°F (-63°C to 91°C)
- Internal ground to improve ground connections
- Heavy duty, reinforced zinc die-cast housing
- Mates with dual pole metal socket 15-326

Single Pole 1/4 ga. Fine Stranded Copper

23-4325	12', 1 hot
23-4625	15', 1 hot

- Good recoil memory, chemical and abrasion resistance
- Flexible from -87°F to 150°F (-66°C to 66°C)
- Heavy duty, reinforced zinc die-cast housing
- Mates with single pole metal socket 15-320

For a complete listing of electrical assemblies, see our full line catalog.

Electrical & Air Combo Assemblies

3-IN-1

30-2175	15', ABS with QCMS2™ and QCP™ (Quick-Change Plug), rubber air lines
30-2174	15', ABS with QCP™ (Quick-Change Plugs), rubber air lines
30-2170	15', ABS with WEATHER-TITE™ PERMAPLUGS™, rubber air lines
30-2171	15', ABS with zinc die-cast plugs, rubber air lines

4-IN-1 - With Dual Pole

30-2275	15', ABS with (1) QCMS2™ and (1) QCP™ (Quick-Change Plug), dual pole, rubber air lines
30-2277	15', ABS with QCP™ (Quick-Change Plugs), dual pole, rubber air lines
30-2276	15', ABS with WEATHER-TITE™ PERMAPLUGS™, dual pole, rubber air lines
30-2272	15', ABS with zinc die-cast plugs, dual pole, rubber air lines

4-IN-1 - With ISOFLEX™

30-2273	15', ABS with zinc die-cast plugs, ISOFLEX™, rubber air lines
----------------	---------------------------------------------------------------

- Spiral-wrapped for an organized, clean look
- Outstanding kink and abrasion resistance
- Includes hanging clamp and clip for easy installation
- QCP™ cartridge is field replaceable in under two minutes!
- The WEATHER-TITE™ PERMAPLUG™ seal blocks contaminants from entering the electrical system
- The QCMS2™ connects to the QCS2® creating a tight STA-DRY® seal that locks out moisture and contaminants, stopping the devastating effects of corrosion

For a complete listing of electrical assemblies, see our full line catalog.



PLUGS



QCMS2™ connects to QCS2®



QCP™ (Quick-Change Plug)



WEATHER-TITE™ PERMAPLUG™



Zinc Die-Cast Plug

16-730 WEATHER-TITE™ PERMAPLUG™

- WEATHER-TITE™ seal blocks all contaminants from entering the electrical system, creating a complete seal!
- UNBREAKABLE, non-corrosive housing
- 360° ratcheting compression cable clamp
- Thread sealed screws prevent wire pull-out
- Spring-wrapped, machined brass compression pins
- 15-715 replacement insert
- 5-750 replacement rubber seal

For a complete listing of electrical plugs, see our full line catalog.

WEATHER-TITE™ PERMAPLUG™



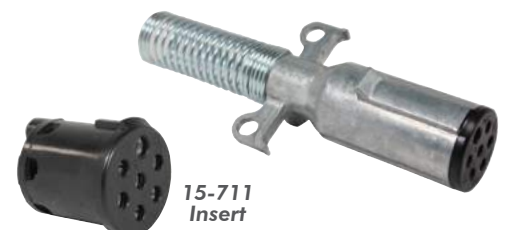
15-715 Insert

15-730 Standard J560 7-way plug with cable guard

- Thread sealed screws prevent wire pull-out
- Spring-wrapped, machined brass compression pins
- Heavy duty, reinforced zinc die-cast housing
- Strong cable guard to support heavy cables
- 15-731 replacement cable guard
- 15-711 replacement insert

For a complete listing of electrical plugs, see our full line catalog.

Zinc Die-Cast Plug



15-711 Insert

Liftgate Plugs



15-335 Single pole plug

15-336 Dual pole plug

- For liftgate applications utilizing a trailer battery pack
- 100 amp continuous capacity; 200 amp intermittent capacity
- Heavy duty, reinforced zinc die-cast housing

For a complete listing of electrical plugs, see our full line catalog.

STA-DRY® Socket



16-720 2-hole, wire insertion, split pin

16-724 2-hole, bullet termination, split pin,
(recommended for use with Phillips QCS2®)

- Inner cavity sealed to prevent contaminants from passing to wire harness
- Non-corrosive housing
- Extended front barrel for additional cable support
- Slanted 5° for moisture drain

For a complete listing of electrical sockets, see our full line catalog.

7-Way Socket

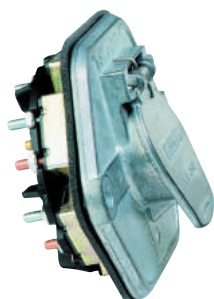


15-720 2-hole, wire insertion, split pin

- Heavy duty, reinforced zinc die-cast housing
- Thread sealed screws prevent wire pull-out
- Elongated holes for mounting adaptability
- Stainless steel hinge pin and spring
- Full-opening lid
- Reduce exposure to contaminants and moisture, use socket boot P/N 15-740

For a complete listing of electrical sockets, see our full line catalog.

7-Way Extended Barrel Socketbreakers



Quick-change
circuit breakers



15-760 Without circuit breakers, split pin

15-761 With 15 amp circuit breakers, split pin

15-762 With 20 amp circuit breakers, split pin

15-763 With 30 amp circuit breakers, split pin

- Full-opening lid
- Includes neoprene closed cell sponge mounting gaskets
- Designed to support ABS cable weight
- Circuit breaker can be changed in 30 seconds
- Allows up to 5 ground circuits

For a complete listing of socketbreakers, see our full line catalog.

Liftgate Sockets



15-320 Single pole socket

15-326 Dual pole socket

- Zinc die-cast housing for durability
- Solid brass pins
- Elongated holes for mounting adaptability
- Stainless steel hinge pin and spring for long life
- 150 amp continuous capacity; 200 amp intermittent capacity

For a complete listing of electrical sockets, see our full line catalog.

15-041	1 plug, 2 gladhand holder
15-042	2 plug, 2 gladhand holder

- 32% of trucker's Workmen's Comp claims are from accidents occurring behind the cab, according to leading insurance carriers
- STOW-A-WAY™ offers safe, easy storage for coiled electrical cables, liftgate cables and air lines when not in use
- Corrosion resistant and extremely durable
- Air and electrical can be coupled/uncoupled with both feet on the ground
- Angled for easy access

STOW-A-WAY™



For a complete listing of cable support products, see our full line catalog.

17-0400	40" chrome
17-0401	40" gold chromate

- Designed for heavier ABS cables
- Extra heavy duty internal spring
- Can accept STOW-A-WAY™ (15-041, 15-042), with 17-039 mounting kit
- Includes QWIK-SNAP™ 3-hose holder
- 8" coated spring for corrosion resistance
- Heavy duty 7/16" mounting bolt

Pogo Sticks



For a complete listing of cable support products, see our full line catalog.

17-148	Tracker bar spring kit, 20" spring, with QWIK-SNAP™
17-153	QWIK-SNAP™ 3-hose holder
17-160	Large snap-on clip, black, 4"
17-420	Tracker bar spring kit with dual 16" springs, with QWIK-SNAP™

- Replacement spring and hardware for tracker bars
- Kits include snap-on clip, PVC sleeve, 3-hose holder and spring(s)
- Ideal for ABS cable use

Cable Support



For a complete listing of cable support products, see our full line catalog.

11-5120	12' pair (red and blue)
11-5150	15' pair (red and blue)
11-5400	15' pair (red and blue), with 40" lead

- REMAINS FLEXIBLE AT -85°F (-65°C)!
- FOR EXTREME WEATHER CONDITIONS
- Excellent recoil memory, chemical and abrasion resistance
- POWER GRIP™ gladhand extension provides superior coupling/uncoupling leverage
- Large coil diameter prevents kinking and provides greater recoil

PolarAir®

3 YEAR WARRANTY
See website for details

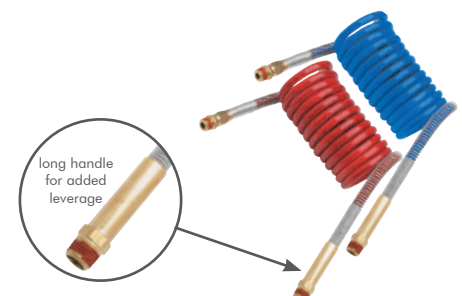


For a complete listing of air assemblies and connectors, see our full line catalog.

11-3120	12' pair (red and blue)
11-3150	15' pair (red and blue)
11-3400	15' pair (red and blue), with 40" lead

- POWER GRIP™ gladhand extension provides superior coupling/uncoupling leverage
- Includes thread seal for secure connection to gladhand and chassis

POWER GRIP™



For a complete listing of air assemblies and connectors, see our full line catalog.

Heavy Duty Coiled Air



11-312	12' pair (red and blue)
11-315	15' pair (red and blue)
11-340	15' pair (red and blue), with 40" lead

- Includes thread seal for secure connection to gladhand
- Single piece trailer side and three-piece swivel tractor side fittings
- Plated steel spring for added tubing protection

For a complete listing of air assemblies and connectors, see our full line catalog.

Rubber Air Lines



Rubber Air Line Assemblies

11-8110	12', black rubber, with red (emergency) grip
11-8111	12', black rubber, with blue (service) grip
11-8112	12', pair, black rubber, with red and blue (emergency and service) grips
11-8115	15', pair, black rubber, with red and blue (emergency and service) grips
11-8117	15', black rubber, with red (emergency) grip
11-8118	15', black rubber, with red (emergency) grip

- Tractor end includes swivel fitting for easy installation and spring guard for strain relief
- Large grips for easy coupling/uncoupling and hose support
- Provides excellent abrasion resistance and resists cracking, kinking and weathering

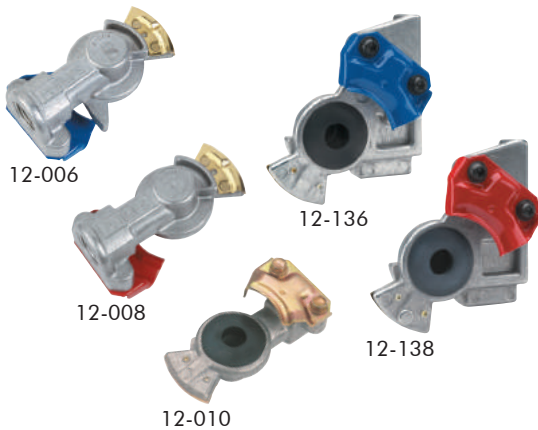
Bulk Heavy Duty Rubber Air

11-8180-250	3/8" I.D. 250' spool, black
11-8190-250	1/2" I.D. 250' spool, black

- Heavy duty EPDM rubber air brake hose
- -40°F to 200°F (-40°C to 93°C)
- Burst Pressure: 871 PSI
- Operating pressure: 145 PSI
- Meets SAE J1402 specifications

For a complete listing of air assemblies and connectors, see our full line catalog.

Straight & Angle Mount Gladhands

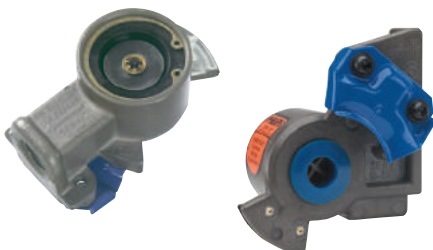


12-006	Service, blue, 1/2" female pipe thread
12-008	Emergency, red, 1/2" female pipe thread
12-010	Universal, 1/2" female pipe thread
12-136	Service, blue, bottom port, 3/8" female pipe thread
12-138	Emergency, red, bottom port, 3/8" female pipe thread

- Wrap-around connector plate provides additional strength
- Powder-coated connector plate for corrosion resistance
- Zinc-coated detent plates
- Keyed for positive connection
- E-coated screws for corrosion protection
- For use on air coil, tractor and trailer (12-136 and 12-138 are for trailer mount only)

For a complete listing of gladhands, see our full line catalog.

QWIK-E® Gladhands



12-206	Service, blue, 1/2" female pipe thread without filter screen
12-236	Service, blue, 3/8" female pipe thread bottom port

- Trailer brakes are released up to 50% faster than with conventional methods
- Quick-release valve and gladhand combined
- Anodized housing for corrosion protection
- For use with ABS and NON-ABS brake systems
- By reducing brake lining and drum wear, thousands of dollars are saved over the life of the trailer

For a complete listing of gladhands, see our full line catalog.

12-600 Pair, (red and blue), clamshell

- Provides strong leverage for coupling/uncoupling gladhands
- Durable and strong; made of solid machined aluminum
- One-piece body for easy installation
- Bright, corrosion-resistant anodized color coating
- Easy installation - Installs between air coil and gladhand
- Heavy diamond knurl for outstanding grip

For a complete listing of gladhand accessories, see our full line catalog.

Coiled Air Gladhand Extensions



Part No.	Gauge	Pkg.	Length	Stranding	Jacket
3-503	4	Spool	25'	133 x 25	Red
3-504	4	Spool	25'	133 x 25	Black
3-511	2/0	Spool	25'	259 x 23	Red
3-512	2/0	Spool	25'	259 x 23	Black

- Rope-style stranding for flexibility
- Easy to strip
- Superior abrasion resistance
- Operating temperature range -40°F to 150°F (-40°C to 66°C)
- Meets SAE J1127 SGT specifications

For a complete listing of battery cable, see our full line catalog.

Battery Cable

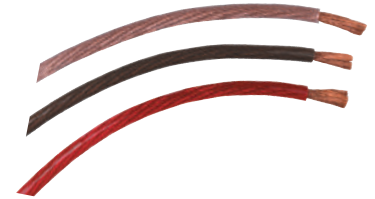


Part No.	Gauge	Pkg.	Length	Stranding	Jacket
3-532	2/0	Spool	25'	259 x 23	CLEAR-VU™, clear
3-565	2/0	Spool	25'	259 x 23	CLEAR-VU™, red
3-566	2/0	Spool	25'	259 x 23	CLEAR-VU™, smoke

- Easy to see corrosion creeping through your battery cable
- Prevents premature battery, starter and alternator replacement
- Rope-style stranding for flexibility
- Easy to strip
- Superior abrasion resistance
- Flexible from -40°F to 150°F (-40°C to 66°C)
- Meets SAE J1127 SGT specifications

For a complete listing of battery cable, see our full line catalog.

CLEAR-VU™ Battery Cable



7 CONDUCTOR 6/14, 1/12 GA. .500 O.D.
Black - Brown - Blue - Green - Red - White - Yellow

Part No.	Cable Type	Length	Package
3-241	DURAFLEX™	50'	Spool
3-242	DURAFLEX™	100'	Spool
3-243	DURAFLEX™	250'	Spool
3-244	DURAFLEX™	500'	Spool
3-245	DURAFLEX™	1000'	Spool

- For general trailer re-wiring
- Black jacket
- Stays flexible to -40°F (-40°C)
- Meets SAE J1128 specifications

For a complete listing of bulk cable, see our full line catalog.

DURAFLEX™ Trailer Cable



Color	Gauge	100 Ft Spool	1000 Ft Spool
Black	14	2-121	2-121-1000
Blue	14	2-122	2-122-1000
Brown	14	2-123	2-123-1000
Green	14	2-124	2-124-1000
Red	14	2-125	2-125-1000
White	14	2-126	2-126-1000
Yellow	14	2-127	2-127-1000

For a complete listing of primary wire, see our full line catalog.

Primary Wire



Crimpable Battery Terminals



Gauge	Description	Positive	Negative
2/0	Straight clamp	8-1160	8-1161
2/0	Left elbow clamp	8-1260	8-1261
2/0	Right elbow clamp	8-1360	8-1361
2/0	Flag	8-1460	8-1461



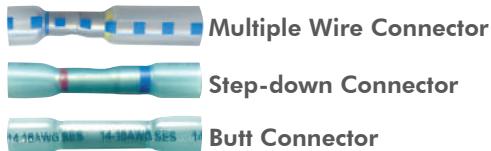
GROUP 31

Gauge	Description	3/8" Hole Single	3/8" Hole Dual
2/0	Straight Clamp	8-1763	8-1863
2/0	Non-rotating	8-4763	8-4863

- Tin plated for added conductivity and corrosion resistance
- Ideal for crimping or soldering
- Exceeds SAE conductivity standard J163 and J1811

For a complete listing of battery terminals and accessories, see our full line catalog.

STA-DRY® Heat Shrink Connectors



1-1724	16-14 ga., multiple wire connector, 10/bag
1-1728	22-18 ga. to 16-14 ga., step-down connector, 10/bag
1-1962	16-14 ga., butt connectors, 25/bag

For a complete listing of heat shrink connectors, see our full line catalog.

Torches



4-054	Mini-jet torch, blister pack
4-057	Professional torch, box

- Waterproof ignition system
- Refillable tank
- Adjustable gas flow

For a complete listing of heat torches, see our full line catalog.

PERMALITE™ XB LED



51-22111	PERMALITE™ XB LED, individual retail box
51-22114	PERMALITE™ XB LED, bulk pack

- 1600 lumen output
- Draws only 1.7 amps at 12V DC
- Universal mounting holes
- 18.25" X 5.75" X 1.10" (.75" recessed) design can fit just about any application
- Polycarbonate lens and housing
- Designed for extreme temperatures: -40°F to 140°F (-40°C to 60°C)
- 175° light spread offers more lit area inside the trailer

For a complete listing of PERMALITE™ products, see our full line catalog.

STA-DRY® Document Holder



16-802	STA-DRY® document holder
16-801	STA-DRY® document holder replacement lid

- Water proof – Documents remain dry in extreme weather
- Stainless steel tether prevents misplacement of lid
- Twist-on lens with large grips – easy to use with gloves
- Stainless steel hardware – keeps documents rust free
- Mounts with most competitive document holders
- Large interior for multiple documents - 8 mounting holes

For a complete listing of document holder products, see our full line catalog.