

AAR Cruciform Style Kingpin



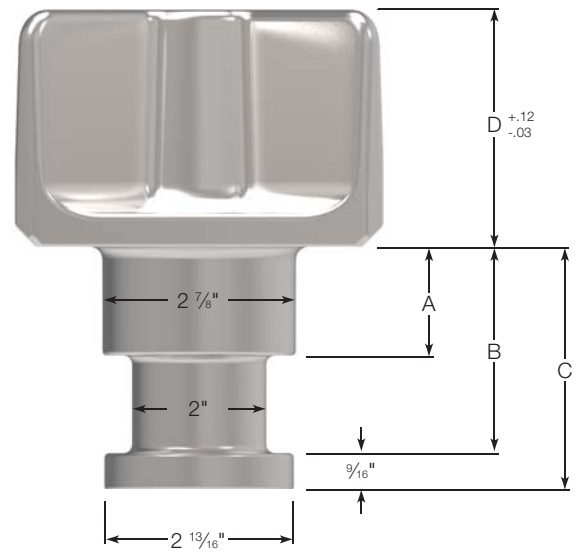
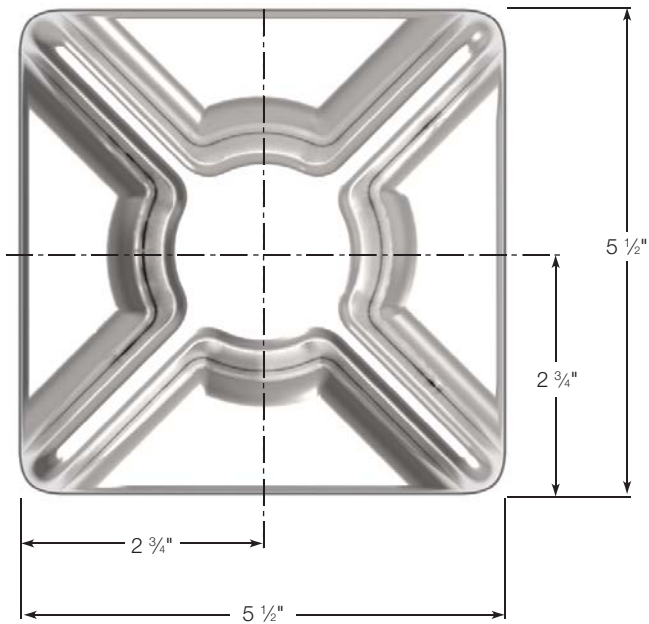
AAR kingpins are suitable for OEM and aftermarket replacement. They are intended to be installed by welding, using a procedure published by the American Welding Society or other technical organization. When properly installed they will meet or exceed the performance requirements of the American Association of Railroads (AAR) standard M-931 as well as the Society of Automotive Engineers (SAE) and the Truck and Trailer Manufacturers Association (TTMA).



Technical Specifications

- **MATERIAL – AISI 4320H**
- **HEAT TREATMENT**
Through hardened using a quenched and temper process, which produces a surface hardness of 380-420 BHN.
- **STRENGTH**
At the above hardness the material will have an approximate 190,000 p.s.i. ultimate strength and 145,000 p.s.i. yield strength.
- **IMPACT AND WEAR RESISTANCE**
The high nickel alloy and heat treat process provides a good balance between hardness (wear resistance) and low brittleness (good impact resistance).
- **QUALITY ASSURANCE**
Rigid metallurgical cleanliness and quality standards including:
 - 100% Brinell Hardness testing.
 - 100% magnetic particle inspection.
 - 100% ultrasonic testing (MS105, tightened C = 0).

Cruciform Style - 4320H Steel Forging



| Part Number | Bolster Plate Thickness | Weight | A | B | C | D |
|---------------|-------------------------|---------|--------|--------|--------|-------|
| KZ-AAR-X2-2.4 | 1/4" | 15 lbs. | 1.558" | 3.012" | 3.574" | 2.44" |
| KZ-AAR-X3-2.4 | 5/16" | 15 lbs. | 1.620" | 3.074" | 3.636" | 2.44" |
| KZ-AAR-X4-2.4 | 3/8" | 15 lbs. | 1.683" | 3.137" | 3.699" | 2.44" |
| KZ-AAR-X2-3.6 | 1/4" | 18 lbs. | 1.547" | 3.001" | 3.563" | 3.46" |
| KZ-AAR-X3-3.6 | 5/16" | 18 lbs. | 1.310" | 3.064" | 3.626" | 3.46" |
| KZ-AAR-X4-3.6 | 3/8" | 18 lbs. | 1.683" | 3.137" | 3.699" | 3.46" |